



Rewarding Learning

General Certificate of Secondary Education
2019

Centre Number

| | | | | |
|--|--|--|--|--|
| | | | | |
|--|--|--|--|--|

Candidate Number

| | | | | |
|--|--|--|--|--|
| | | | | |
|--|--|--|--|--|

Construction and the Built Environment

Unit 1
Introduction to the Built Environment



GCN11

[GCN11]

THURSDAY 30 MAY, AFTERNOON

TIME

1 hour.

INSTRUCTIONS TO CANDIDATES

Write your Centre Number and Candidate Number in the spaces provided at the top of this page.

Write your answers in the spaces provided in this question paper.

Answer **all seven** questions.

INFORMATION FOR CANDIDATES

The total mark for this paper is 80.

Figures in brackets printed down the right-hand side of pages indicate the marks awarded to each question or part question.

Quality of written communication will be assessed in questions **4(c)** and **7(b)**.

For Examiner's use only

| Question Number | Marks |
|-----------------|-------|
| 1 | |
| 2 | |
| 3 | |
| 4 | |
| 5 | |
| 6 | |
| 7 | |

| | |
|-------------|--|
| Total Marks | |
|-------------|--|

| Examiner Only | |
|---------------|--------|
| Marks | Remark |
| | |



Fig. 2

(b) 1. The type of dwellings shown in Fig. 2 are:

_____ [1]

2. **Two** distinguishing characteristics of this type of dwelling are:

 _____ [2]

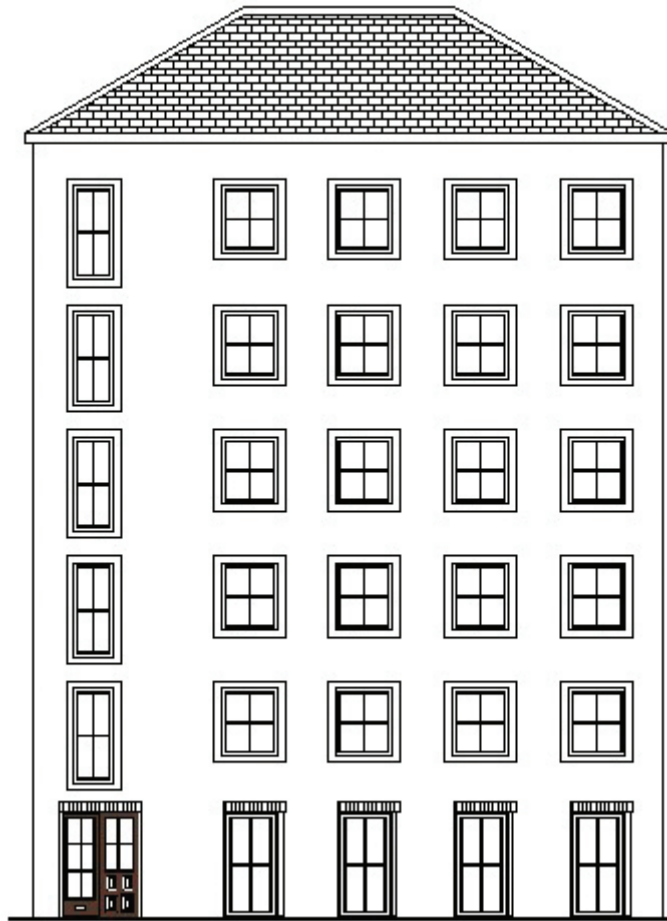


Fig. 3

(c) 1. The type of residential accommodation shown in **Fig. 3** is:

_____ [1]

2. **Two** distinguishing characteristics of this type of accommodation are:

 _____ [2]



Source: © Chief Examiner

Fig. 4

(d) 1. The type of dwelling illustrated in **Fig. 4** is:

_____ [1]

2. **Two** distinguishing characteristics of this type of dwelling are:

_____ [2]

| Examiner Only | |
|---------------|--------|
| Marks | Remark |
| | |

4 Fig. 5 shows a sectional view for a Portal Framed Structure to be used for a farm building.

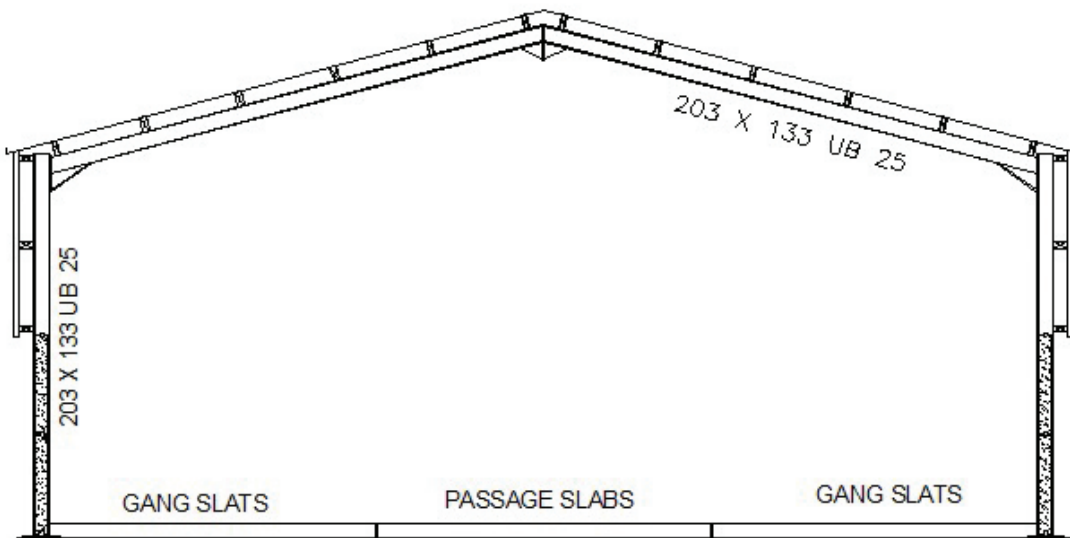


Fig. 5

(a) Other than steel, name **two** common materials from which a Portal Frame is normally manufactured.

1. _____ [1]

2. _____ [1]

(b) List the **two** most common methods used to join a steel framed structure.

1. _____ [1]

2. _____ [1]

| Examiner Only | |
|---------------|--------|
| Marks | Remark |
| | |

3. Developed Design

[3]

4. Technical Design

[3]

| Examiner Only | |
|---------------|--------|
| Marks | Remark |
| | |

BLANK PAGE

(Questions continue overleaf)

7 Timber framed construction is commonly used as a modern method of construction for social, semi-detached domestic housing in the United Kingdom. Much emphasis is put on the thermal insulation of such properties as enforced by the Building Regulations.

(a) Describe the term Platform Frame as used in timber framed construction.

[2]

| Examiner Only | |
|---------------|--------|
| Marks | Remark |
| | |

Permission to reproduce all copyright material has been applied for.
In some cases, efforts to contact copyright holders may have been unsuccessful and CCEA
will be happy to rectify any omissions of acknowledgement in future if notified.